



# EXPRESS 6 6-PASSENGER

## Designed for Comfort, Built to Perform

Take everyone along for the ride in the 6-passenger E-Z-GO Express™ 6 with extended legroom and optional enhanced front suspension. Experience the perfect blend of performance and durability for a carefree journey.



INDUSTRY-LEADING  
ELITE LITHIUM DRIVETRAIN



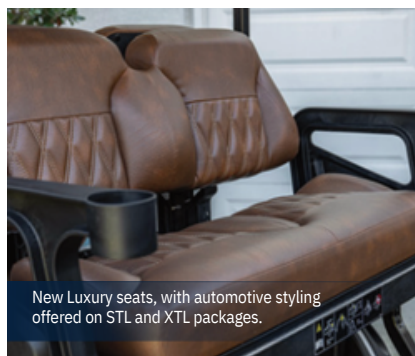
POWERFUL  
13.5-HP ENGINE



AUTOMATIC PARKING BRAKE  
ON ELITE MODELS



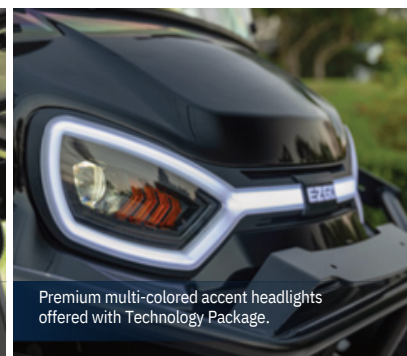
Enjoy lifted and standard ride height package options.



New Luxury seats, with automotive styling offered on STL and XTL packages.



The technology package with Bluetooth capabilities on featured vehicle packages.



Premium multi-colored accent headlights offered with Technology Package.

# EXPRESS 6

6-Passenger

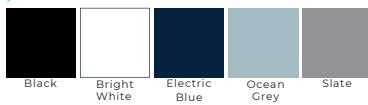


	VALOR		TOURING			SUMMIT		
	Crafted for carefree adventures.		Perfect for spins around the neighborhood.			For those who want to carve their own path.		
PACKAGE	S	S+	S	ST	STL	X	XT	XTL
POWERTRAIN	48V		ELiTE® Lithium or 13.5 hp Gas Engine			ELiTE Lithium or 13.5 hp Gas Engine		
HEIGHT	Standard		Standard			Lifted		
TIRES	Kenda K500 20x8-10, Black Steel Wheels	Hole-N-One, 20x9-12, Rogue Alloy Wheel -	Choose Your Own			Choose Your Own		
DECALS	Black	Metallic	Metallic			Black		
HEADLIGHTS	Halogen		LED	LED Headlights W/ RGB Accents		LED	LED Headlights W/ RGB Accents	
TURN SIGNAL	-	-	-	Turn Signal Stalk		-	Turn Signal Stalk	
SEATS	Standard Unique		Standard or Premium	Premium or Signature	Luxury	Standard or Premium	Premium or Signature	Luxury
TECHNOLOGY	-	-	IntelliGauge® (ELiTE Only)	ECOXGEAR Screen & Speaker		IntelliGauge (ELiTE Only)	ECOXGEAR Screen & Speaker	
USB			USB-A	USB-A & C		USB-A	USB-A & C	
ACCENT LIGHT	-	-	-	✓	✓	-	✓	✓
GLOVEBOX KIT*	-	-	-	✓	✓	-	✓	✓
BACKUP CAMERA	-	-	-	✓	✓	-	✓	✓
FENDER FLARE	-	-	-	-	-	✓	✓	✓
BRUSH GUARD	-	-	-	-	-	-	✓	✓
KEY TYPE	Common		Common	Unique		Common	Unique	

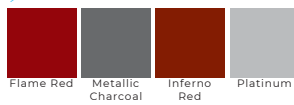
\*Kit includes a glovebox door, glovebox shelf and storage mats.

## Color Options

### Standard Colors



### Premium Colors



## Seat Options

### Luxury



Midnight Black



Amarillo Brown  
Tundra Grey (CoolTouch)

### Signature



Amarillo Brown

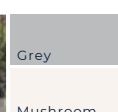


Tundra Grey (CoolTouch)

### Premium



Black



Grey  
Mushroom

### Standard



Black



Oyster  
Grey  
Tan

## Tire & Wheel Options



Hole-N-One, 20x9-12, Rogue Alloy Wheel



Paramount, 205/35-14, SBR, FTV Alloy Wheel



MT Paramount, 23x10-12, Black Steel D Window Wheel



Kruizer, 185/60-14, SBR, SPDR Alloy Wheel



MT Paramount, 23x10-14, Radial, Black SPDR Alloy Wheel

Features and specifications of vehicles subject to change without notice. Vehicles as photographed may include options not included on base model. Apple CarPlay® vehicle user interface is a product of Apple Inc., and its terms and privacy statements apply. Services are subject to change without notice. Not all phones are compatible. Operability depends on network availability, a cellular connection, and GPS signal. Data plan rates may apply. Apple CarPlay® is a trademark of Apple Inc. Siri®, iPhone® and iTunes® are trademarks of Apple Inc., registered in the U.S. and other countries. Android Auto™ vehicle user interface is a product of Google LLC and its terms and privacy statements apply. Services are subject to change without notice. Not all phones are compatible. Operability depends on network availability, a cellular connection and GPS signal. Data plan rates may apply. You can check which smartphones are compatible at g.co/androidauto/requirements. Android Auto™ is a trademark of Google LLC. California state law prohibits the sale of Model Year 2024 and later gas-powered golf carts. A compatible Bluetooth®-enabled phone must first be paired. Phone performance depends on software, coverage and carrier. The Bluetooth® word mark and logos are registered trademarks of Bluetooth SIG, Inc. Use of such marks by Textron E-Z-GO LLC is under license. ©2026 Textron E-Z-GO LLC 82455-G25 (Rev. 01/2026)

